

# **BOURN PARISH COUNCIL ANNUAL REPORT 2014**



**Chairman's report to the Annual Parish Meeting 18 June 2014**

## **Councillors**

Two councillors resigned from Bourn Parish Council (BPC) during the past year and a further three (including myself) decided to stand down at the end of their term of office. My thanks to the departees—Rob Ansell, Heather McClean, Xanthe Rees-Howell and Gill Pountain – for all their efforts on behalf of the village.

Unfortunately the call for new councillors to replenish the ranks did not produce sufficient candidates to trigger an election. Therefore the council will be looking for additional members to rebuild the team as quickly as possible. Please consider giving them your support by volunteering to join the council.

## **Planning**

BPC has continued to oppose aspects of South Cambridgeshire District Council (SCDC) draft Local Plan, notably the proposed developments at Bourn Airfield and sites west of Cambourne. The council is working in partnership with other local PCs to produce detailed, evidence-based arguments to present to the inspector when public hearings on the plan take place in October.

The other major planning issue in the past year has been the proposed redevelopment of the Thyssen Krupp Tallent plant at Bourn Airfield. BPC worked with Caldecote PC to ensure that the design for the new factory would be subject to rigorous, enforceable conditions with respect to noise and light pollution. The existing building has now been demolished; no start date for redevelopment has been made public at the time of writing.

## **Cambourne Bus Link**

The issue of a bus link to Cambourne from the Broadway has taken a step forward with the delivery of a petition from Upper Cambourne

to SCDC urging them to complete the link as soon as possible. Cambourne PC and BPC have re-affirmed their intention to submit a joint application for a bus/emergency vehicle link that would establish a shared ownership of the exit onto the Broadway. SCDC is now in discussion with MCA Developments to unlock the required funding to support this application.

### **Traffic**

BPC has been successful in securing funds under the “Minor Highways Improvement Scheme” for the reduction of the speed limit at the Broadway, implementation of speed limit markings/repeater signs and installation of an interactive “30mph” warning display. Some of this work has already been completed at the time of writing. The council is now in the process of identifying requirements for the next phase of traffic calming in the village such as pinch points and a school crossing point. Suggestions from villagers would be very welcome to help the council prioritize the items for this phase. The Speedwatch group remains active and is playing an important role in gathering statistics to support future funding applications.

### **Parking**

Unfortunately there has only been limited progress on parking issues over the last year. BPC has been in discussion with the following groups -

- SCDC : a map of potential off-street parking sites have been identified in Hall Close
- School : a proposal has been agreed to create a new drop off site to the west of the school gates
- Surgery : the offer of staff parking at Manor Farm is under review
- Willow Tree : the owner has described current procedures to mitigate parking problems during special events

### **Water**

There have been no major concerns with flooding issues this year despite a 50% increase in winter rainfall. However BPC remains committed to pursuing improvements to the catchment system as a whole to reduce the risk to the village.

BPC has worked closely with Cambridgeshire County Council (CCC) to maintain the drainage system and make improvements where possible. In the latter case, the Caxton End road has been raised

and resurfaced (to reduce the risk of prolonged flooding after high rainfall events) and the drains along Alms Hill have been lowered to increase capacity and reduce pooling opposite the Lalbagh restaurant.

Bourn Action Flood Group (BFAG) has been reactivated to support the council in working with CCC, SCDC and local PCs / landowners to identify and lobby for further improvements to Bourn Brook from both flooding and ecological perspectives. If you wish to join the group then please contact Nigel Ball at [nigel.ball@cyenz.com](mailto:nigel.ball@cyenz.com)

## **Social Housing**

The latest housing survey (conducted by SCDC in December 2013) identified a need for new 22 homes in the village.

So it is important that BPC continues to work closely with SCDC on the provision of a new social housing site. An outline design has been drawn up adjoining the Hall Close estate and initial “pre application” feedback received from SCDC. The next stage will be to host a joint consultation with the village at the Community Centre. However BPC will not support any new housing without –

- an agreed plan (with SCDC/CCC) to generate more car parking spaces in Hall Close
- an agreed strategy (with the school) to provide a more effective drop-off system
- an arrangement with SCDC to take ownership of the playground to improve/extend the facilities as part of any development.

If this cannot be achieved then alternative sites must be sought.

## **Play Equipment**

Inspection and maintenance of play equipment has been ongoing with the invaluable assistance of the village’s volunteer inspectors under the guidance of coordinator Frank Haxton. Once again BPC would like to thank all of those involved in this activity.

Bourn Youth Project has now handed over responsibility for the Jubilee Recreation Ground to BPC. And the recreation ground is getting a lot more use as a result of their efforts.

Football posts have been installed on the Hall Close playing area to the south of the ditch.

BPC has now taken ownership of the Broadway playground site and will be turfing this ground to provide an initial open space.

Consultation with residents on the design of a new playground / public space will start as soon as a local coordinator has been co-opted to canvas opinion.

## **Finance**

The parish precept for this year was set at £31123. This is 7% less than last year due to

- SCDC removing their grant for council tax benefits
- BPC having healthier than expected reserves

The beneficiaries of the S137 donations this year were — Merrybourn, Bourn School Proms, the Village Hall and Churchyard grass cutting.

BPC has also set aside some funds to commission expert advice in their submission to the inspector at the public hearing on SCDC's Local Plan.

## **Footpaths**

BPC's two volunteer footpath co-ordinators - Angela Marcham and Graham Bruce – have continued to monitor the parish footpaths throughout the year. BPC remains very grateful for their services.

*Nigel Ball – Chairman to 2014*

## **New Chairman's Report to the Annual Parish Meeting of Bourn**

As my first Annual Parish Meeting as Chairman, I would like to welcome the new Parish Councillor Stephanie Aldrich to the team and thank the three former Parish Councillors for restanding: Vivien Bruce, Steve Jones and Les Rolfe. Thanks must also go to the Councillors who have stood down: Nigel Ball, Gill Pountain, Xanthe Rees-Howell, Heather McClean and Robert Ansell for all their experience and contributions over the years they have been part of the Parish Council.

I would also like to thank those who are helping the Parish Council to do their work: Frank Haxton for the inspection of all the play equipment, Angela Marcham for the reporting on the footpaths and Hilary Gretton for her role as tree warden.

*Neil Blair – Chairman*

## Parish Council Budget FY2014 & FY2015 (All figures in £)

FY – Financial Year B/F – Brought Forward C/F- Carried Forward O/S – Outstanding at Bank

<b>Payments</b>	<b>Approved Budget FY2014</b>	<b>Actual 31/03/2014</b>	<b>Approved Budget FY2015</b>
Advertising	500	332.27	400
Salaries	1976	1995.48	2067
General Admin	15000	12535.57	15450
Section 137	1140	1190.25	1390
Special Projects			
Film Equipment	500	434.18	
Legal Advice For Planning			3000
Broadway POS			1000
Signage		258.00	
Safety Surfacing	1738	822.00	
Village & Assets Maint.	9160	4506.37	6700
Loan	3526	3525.80	3526
<b>Total</b>	<b>33540</b>	<b>25599.92</b>	<b>33533</b>

<b>Receipts</b>	<b>Approved Budget FY2014</b>	<b>Actual 31/03/2014</b>	<b>Approved Budget FY2015</b>
General Admin		15.45	15
Precept	31123	31123.00	31123
SCDC Grant	2417	2417.00	0
Village & Asset Maint.		835.27	50
Release From Reserves			2345
Misc.		24.50	
<b>Total</b>	<b>33540</b>	<b>34415.22</b>	<b>33533</b>

B/F FY2013	Reserves	RECEIPTS	PAYMENTS	C/F FY2014
893.49	P3 Fund	0.00		893.49
143.40	Parish Plan			143.40
0.00	Youth Project	2146.02	306.30	1839.72
2555.00	Speed Reduction Scheme			2555.00
10000.00	Traffic/Highways			7700.00
4262.00	Safety Surfacing Hall Close Play Area	1000.00	5262.00	0.00
0.00	Ramblers Benches	150.00	150.00	0.00
0.00	Riddy Lane Ditch Fencing	524.00	524.00	0.00
0.00	Play Equipment Maintenance Fund	500.00	65.03	434.97
0.00	Pos Fund Broadway	1026.59		1026.59
0.00	Ldp Response Assistance		650.00	350.00
32361.56	GENERAL RESERVES			42332.08
<b>50215.45</b>	<b>Total</b>	<b>5346.61</b>	<b>6957.33</b>	<b>57275.25</b>

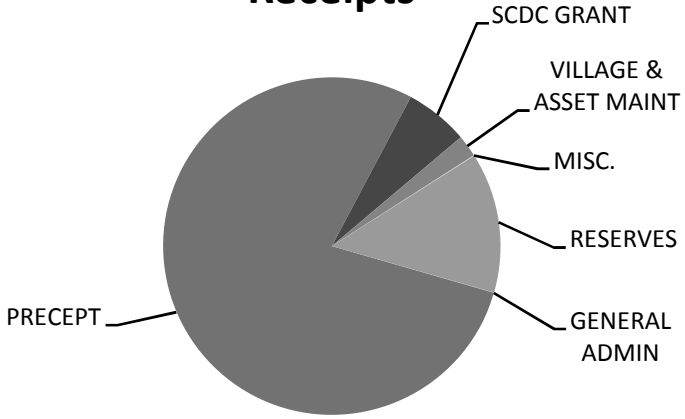
VAT	3782.25	3927.03
-----	---------	---------

<b>Total Receipts</b>	43544.08	
<b>Total Payments</b>		36484.28

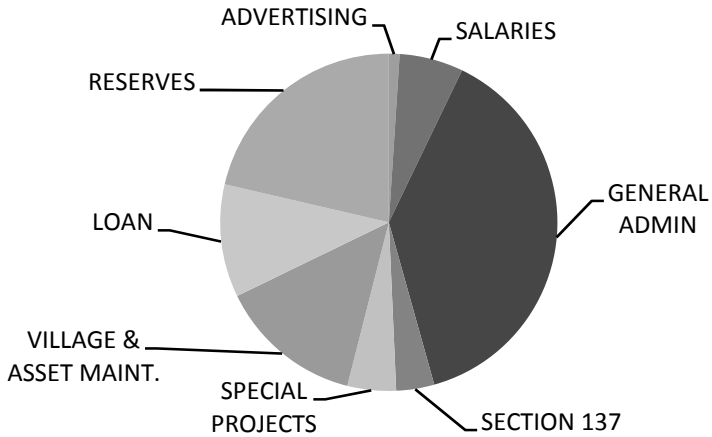
### Bourn Parish Council Cash Book Reconciliation

		Carry forward	
Balance b/f	£50215.45	CONSOL. STOCKS	£75.00
Receipts	£43544.08	CURRENT ACCT	£31,861.02
Payments	-£36484.28	30 DAY BUSINESS	£27,299.48
		O/S	-£1960.25
Balance c/f	£57275.25		£57275.25
B/f Bank & cash	£50215.45	Payments	£36484.28
Receipts	£43544.08	C/F	£57275.25
	<u>93759.53</u>		<u>93759.53</u>

# Receipts



# Payments



## Parish Council Contacts

(01954)

Stephanie Aldrich	49 Caxton End	269855
Neil Blair (Chairman)	19 Church Street	719794
Vivien Bruce	16 Kingfisher Close	718221
Steve Jones	Rosemary and Lavender Cottage, Caxton Road	719329
Les Rolfe	57 Hall Close	718150

### Parish Clerk

Mrs. Gail Stoehr

30 West Drive, Highfields Caldecote, Cambridge, CB23 7NY

Tel: (01954) 210241

Email: [bournpc@lgs-services.co.uk](mailto:bournpc@lgs-services.co.uk)

### Vacancies

There are currently 4 vacancies for councillors on the Parish Council. If you would like further information or would like to apply, please contact the Parish Clerk.